

[View this email in a browser](#)



Welcome to '**Experts in MS**' – the new name for our professional network and regular newsletter.

We want '**Experts in MS**' to be the place where you lead the conversations and tell us, and your colleagues, what's going on with MS services right now.

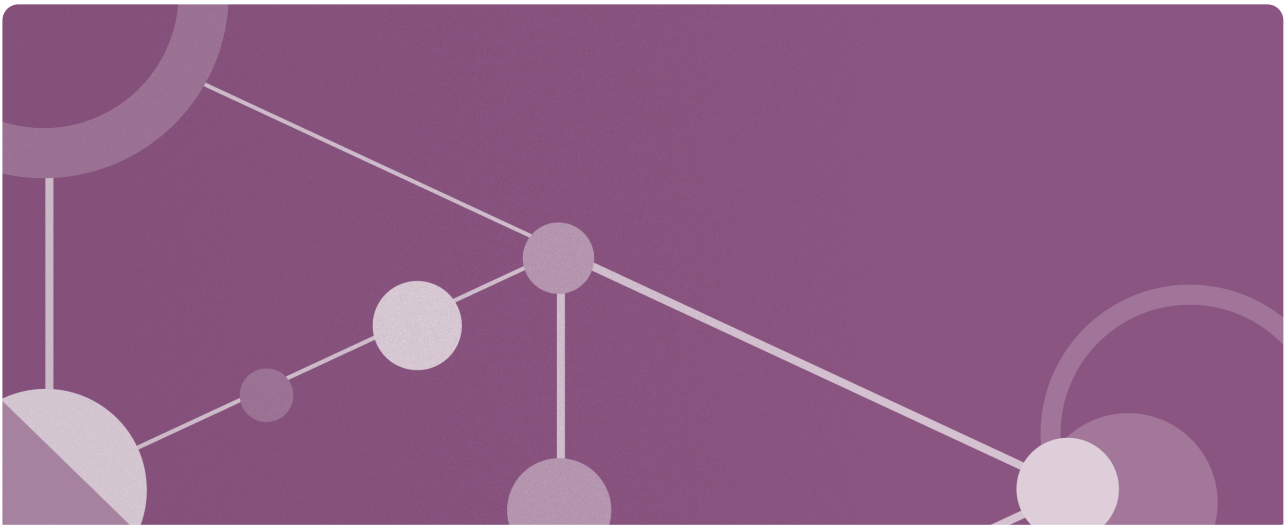
What can our new team do for you?

Our Stakeholder Engagement Officers are organising our programme of MS summits. They're also here to help you share what you're doing with the rest of the network.

If you'd like to ask the network for ideas, tell us what you need, or talk about holding a summit in your area contact:

professionalnetwork@mssociety.org.uk.

[Read our latest information →](#)



Help test our Experts in MS forum

This spring we're launching a new version of our forum. We're adding a private space dedicated to professionals where you can share ideas, ask for advice and get support from one another.

But first we need your help to test it this April and make sure it does what you need. Email us to get involved:

professionalnetwork@mssociety.org.uk



Our rehabilitation research leads to national campaign

Last year we shared the results of our research into the impact of COVID-19 on MS services. Thanks again to everyone who took part.

Rehabilitation was the area you were most concerned about. As a result we launched our 'Too much to lose' report and national campaign.

Over a thousand people with MS contacted their local NHS Trusts and press.

[Read more about 'Too much to lose' →](#)

New ways of delivering neuro-rehab you'd like to share, or ideas on how we could support you? Get in touch:

professionalnetwork@mssociety.org.uk



Apply for an Innovative Models of Care evaluation

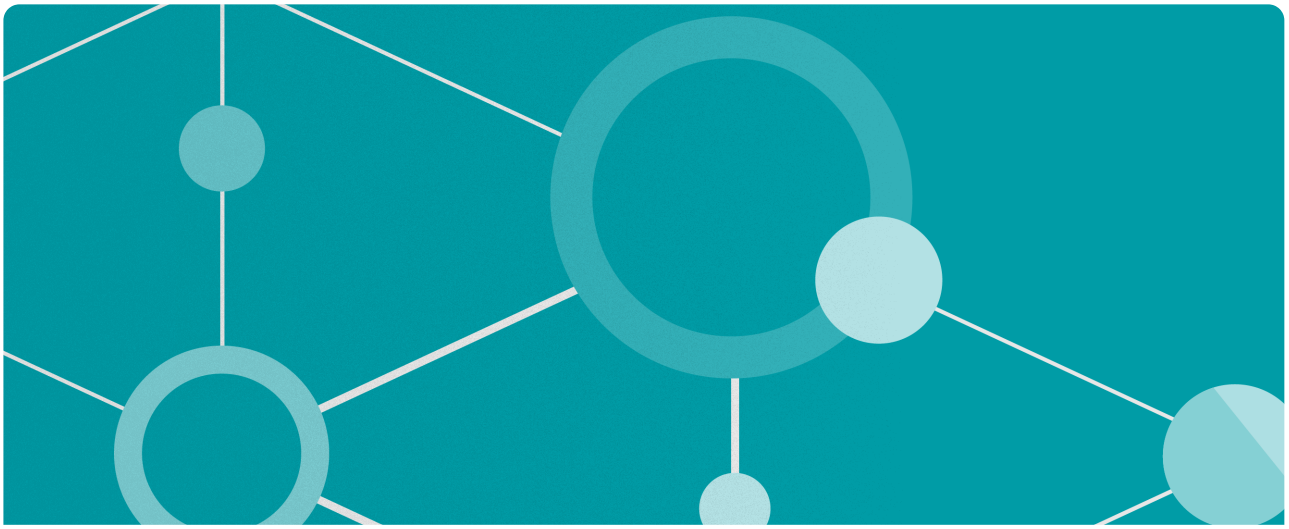
Our Innovative Models of Care programme highlights outstanding and innovative services for people with MS.

[>> Read two service evaluations here](#)

This year, services using new approaches to support the health and wellbeing of people with MS can apply for a professional evaluation worth £15,000-£20,000. Successful applicants would then work with us to promote adoption elsewhere in the UK.

Review and funding awards will be in April and October.

[Find out how to apply →](#)



Free online support for people affected by MS

Our wellbeing sessions and webinar programme offer free support to people affected by MS across the UK.

Sessions include:

- support groups for newly diagnosed, carers and people with advanced MS
- self-management tips
- wellbeing sessions
- monthly webinars on resilience, relationships, fatigue and more

Share them with your patients using the link mssociety.org.uk/connect-online.

Find out more about our online sessions →



Updated guidance: COVID-19, vaccines and DMTs

We update our COVID-19 webpages regularly to respond to government announcements, information on vaccines roll out, treatments, benefits, support and services.

Our information is based on advice from our medical advisors, the NHS, and the Association of British Neurologists.

[Find out more about MS and vaccines →](#)

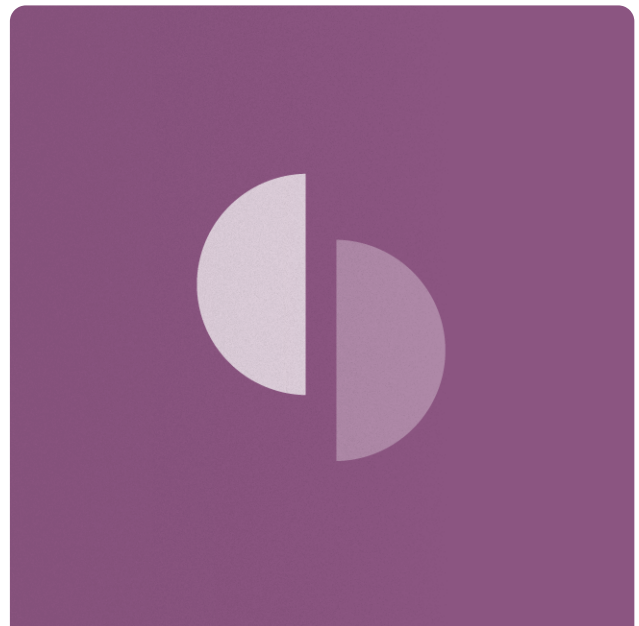
We'd love to see you at the MS Trust conference

This three day virtual event is a great opportunity for MS health professionals to network, learn, share expertise to improve care for everyone affected by MS. Bursaries are still available and you can book online

[Register for the conference →](#)



We want to hear from you!



Sharing is caring

Please share the Network with a friend or colleague, it's very easy...

What would you like to see from Experts in MS?

If you have any ideas for content, would like to submit articles, or have any questions about the network, email us.

Just forward this email and ask them to sign up:

mssociety.org.uk/professionalnwork

Share your ideas →

Forward to a friend →

Let's stop MS together



You are receiving this email because you are a member of the Professional Network.

[Unsubscribe](#)

This email was sent to
stevefrost18@gmail.com

[Privacy & Cookie Notice](#)