



Welcome to the first 'Experts in MS' newsletter of 2024!

There's new research news; resources on benefits for people with MS; and information on our webinar on the benefits of cultural awareness in neuro-rehab services.



Cultural Awareness within Neurorehabilitation

We collaborated with the Greater Manchester Neurorehabilitation and Stroke Integrated Delivery Network on long term conditions and treating culturally diverse patients.

And we held a webinar that included presentations from Dr Carol Sampson (Neuro Psychologist), Suki Wong (Neuro Physiotherapist) and Joanna Rutkowska-Wheeldon (Neuro Occupational Therapist).

The webinar covered:

- Case studies on how to improve outcomes
- Importance of cultural and value-based goal setting
- How these values can help improve services and patient care

[Watch the webinar →](#)



MS Awareness e-learning for care workers

Our free online course with learning outcomes and content developed by people with MS and health and social care professionals, is produced in partnership with Grey Matter Learning.

Aimed predominantly at those working in care, it is also useful for anyone providing support to people living with MS.

The course explores the different types of MS, how it impacts the care people may need, and how to support people with MS – including those with complex needs. It also includes links to a whole range of information resources, support and organisations.

An accreditation is available from Grey Matter Learning – details are at the end of the course.

[Go to e-learning course →](#)



Benefits and financial issues

If you or your colleagues are being asked for information or advice on benefits and financial matters, we have a range of information and resources you can signpost people with MS to.

- [10 tips to help with everyday costs](#)
- [Are you entitled to PIP?](#)
- [Benefits explained](#)
- [PIP Masterclass with Q&A with our MS Benefits Advisor](#)
- [Ways to get over PIP hurdles](#)



Mapping MS Care provision in the UK

Dr Seema Kalra at the University Hospital of North Midlands NHS Trust is conducting a project to understand if there are disparities in care provision for people living with Progressive MS in the UK.

She is inviting MS healthcare professionals to complete a short survey (maximum 10 minutes) on the structures and processes available locally for providing care to people with MS.

[Help with the short survey →](#)



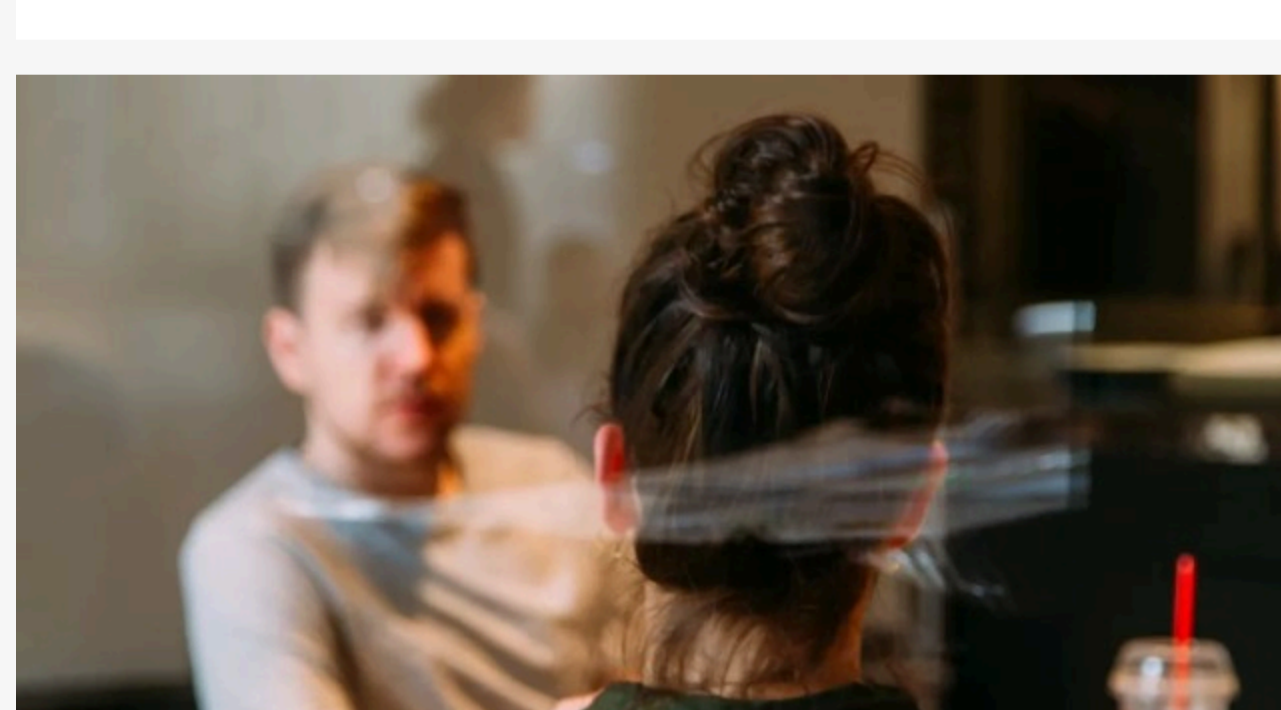
Latest research

New research with ancient human DNA shows the origins of MS risk genes

Researchers looked at ancient human DNA and compared it to modern-day samples. They could see where and when certain versions of particular genes started to be more common.

The versions of genes we know increase a person's risk of developing MS were first found in individuals called the Yamnaya people. They were sheep and cattle herders living around 5,000 years ago, migrating from the east into north-western Europe.

[Get the research story →](#)



Inside Neurology: Our unique brain

The Neurological Alliance worked with ITN Business as part of their new news-style programme called "Inside Neurology: Our Unique Brain".

The programme features Barrie, who was diagnosed with Parkinson's more than 19 years ago. Barrie also has close connections to other neurological conditions.

This programme also shines a spotlight on neurodiversity and why it is important to reframe thinking about neurodiversity and champion individuals who are neurodivergent.

[Watch the video →](#)



Tell us what you need

Let us know the kind of information and resources you'd like us to produce, and how useful our information is.

[Take our survey →](#)

Get in touch and spread the word!

We want to hear from you. If you want to spotlight your services, have ideas for content, or would like to submit articles, email the team at professionalnetwork@mssociety.org.uk.

Please do share the Network with a friend or colleague, it's very easy to sign up - mssociety.org.uk/professionalnetwork

Let's stop MS together

